



DATASHEET

# Insulated Rail Joint Field Repair Kit

# Insulated Rail Joint Field Repair Kit

Due to the adverse loading conditions seen by the rail, lipping on rail head is a very common phenomenon. This leads to degradation of insulation bonded joints where rail lipping may cause electrical failure and damage to the rail.

## KIT CONTENTS

ITEM NO.	PART DESCRIPTION	QTY	PART NO.
1	Sprayer with Dipping Tool	1	802142
2	Surface Cleaner	1	802161
3	Applicator Gun	1	802141
5	Filler Adhesive	3	802138
6	Mixing Nozzle	18	802140
7	Resealable Dispensing Bag (2"x2")	18	802144
8	Spreader	2	802139
9	Resealable Dispensing Bag (6"x6")	3	802362
10	Dusting Brush	2	802363
11	Cloth Rag	3	50401



## KEY BENEFITS

The IJ Field Repair kit by L.B. Foster Company is designed to be used on insulated bonded joints in the field by repairing a damaged endpost head.

- > Improves the life of a bonded insulated joint showing signs of endpost damage without the need of replacement.
- > Process takes only 10-15 minutes to repair the endpost head per joint
- > One kit can repair 10 joints on average

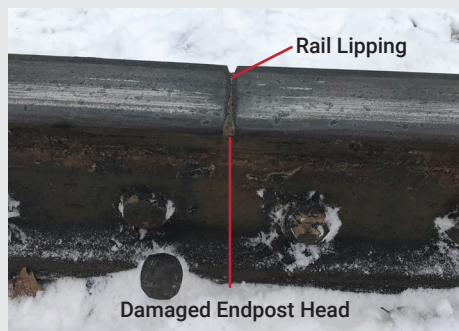


Fig.1 Rail Lipping and Endpost Head Damage



Scan the QR code for a user instructional video

**DISCLAIMER:** While this adhesive is intended to extend the useful life of a bonded insulated joint in track by repairing a worn endpost, L.B. Foster makes no guarantees of any kind except that the adhesive will be free from defects when used as directed. L.B. Foster's sole obligation shall be, at its option, to replace or refund the purchase price of the defective adhesive. L.B. Foster makes no other warranty, express or implied, including, without limitation, the warranties of MERCHANTABILITY and FITNESS FOR A PARTICULAR PURPOSE. Purchaser agrees that L.B. Foster shall not be liable for consequential or incidental damages.