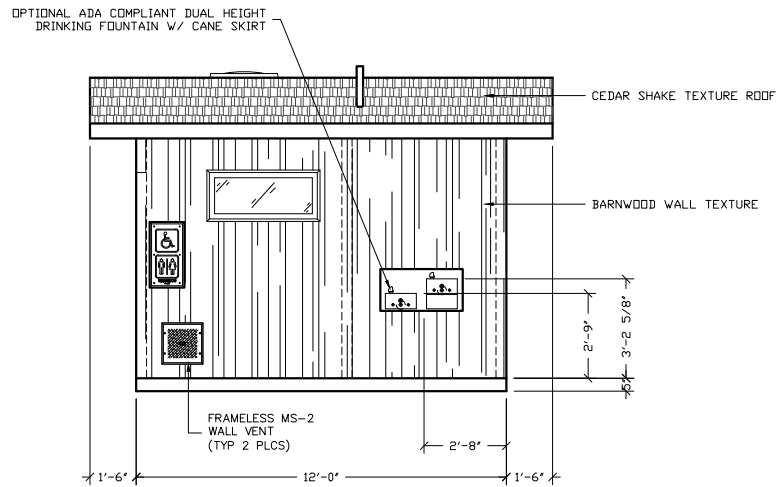
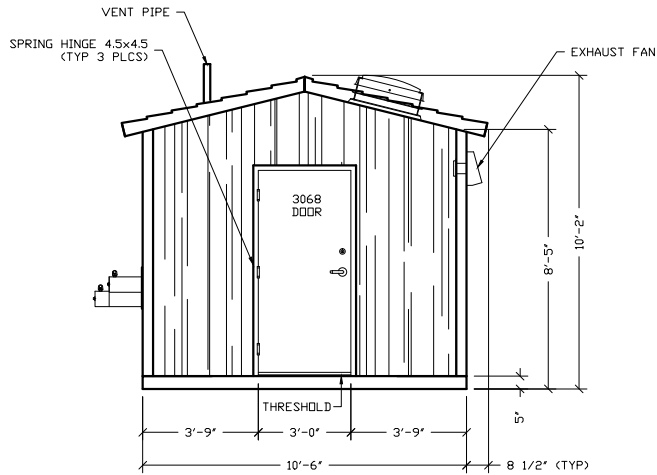


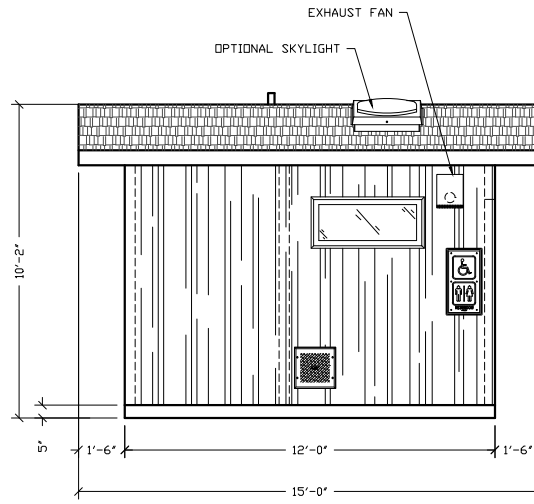
LEFT END ELEVATION



RIGHT END ELEVATION



BACK ELEVATION



LEFT END ELEVATION

**FOR
REFERENCE
ONLY**

EMBEDDED MATERIALS	
ITEM	QTY
SI-2	3
ANCHOR NAIL 1/4x3/4	18
3068 DOOR ASSEMBLY	2
SPRING HINGE 4.5x4.5	6

CU. FT. CONC. SQ. FT. W.W.F.

APPROXIMATE WEIGHT

3808 N. Sullivan Bldg. #7 Spokane, WA 99216

CXT
Precast Products
901 N. Highway 77 Hillsboro, TX 76645

PROJECT FILE
OZARK 1
CXT STANDARD BUILDING

NOTICE
The information contained herein is proprietary and the exclusive property of CXT Incorporated. The information may only be used by the original recipient for the purpose intended. Reproduction or distribution of this information is strictly prohibited without the prior written consent of CXT Incorporated. By allowing use of this information, CXT Incorporated grants no warranty, express or implied, including a warranty of merchantability or of fitness for a particular purpose.

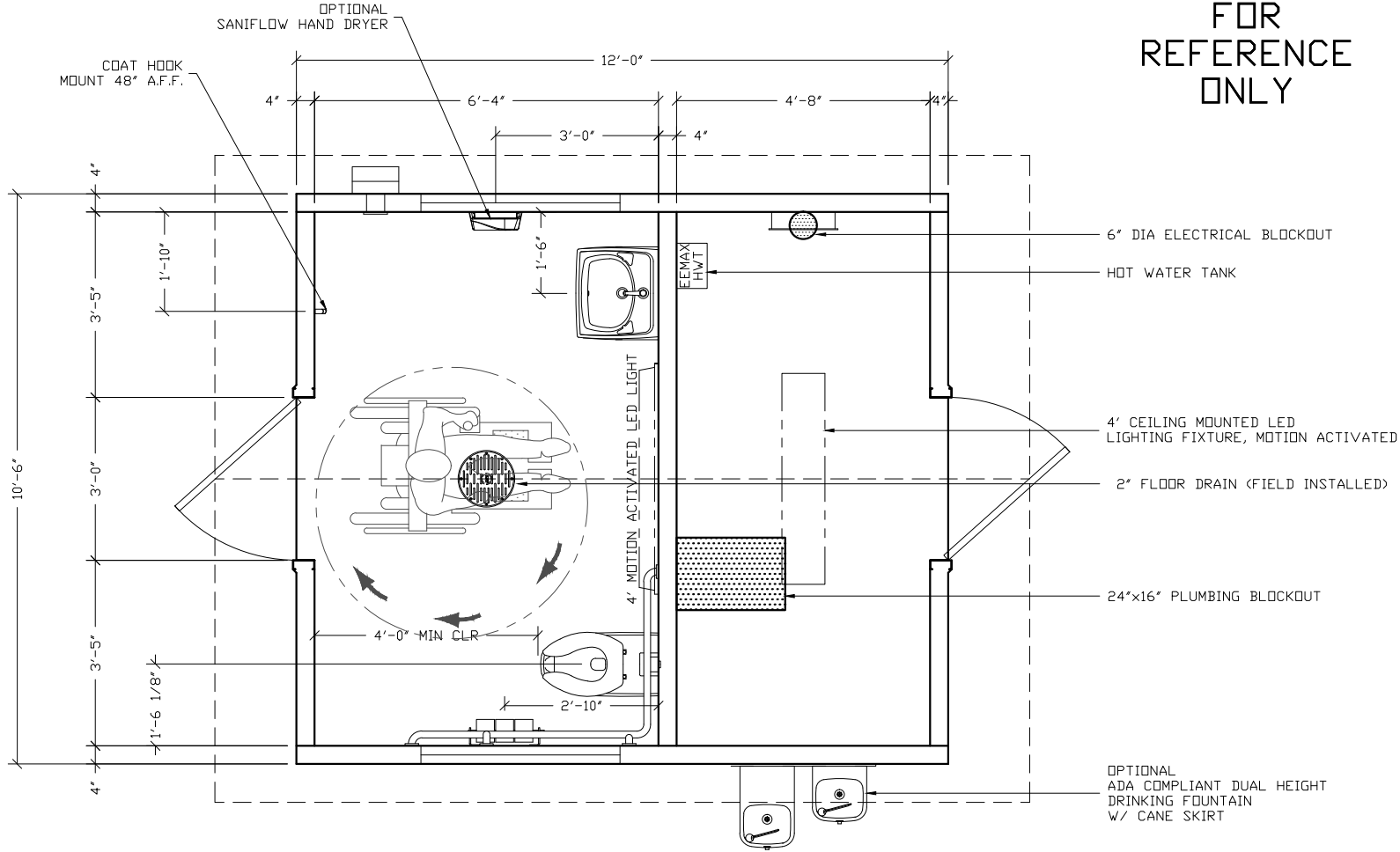
CXT Incorporated

REV.	DESCRIPTION	DATE	BY
SCALE	1/4"=1'-0"	DATE	04-20-18
DRAWN	FILE NO.	PLOT	90-0202
CHECKED	PLOT	48	

BUILDING ELEVATIONS

DWG NO.	SHEET	REV.
OZ 1-02		

FOR
REFERENCE
ONLY



FLOOR PLAN

NOTE:
ELECTRICAL AND PLUMBING COMPONENTS ARE SHOWN FOR GENERAL ARRANGEMENT ONLY. SEE SHEETS OZ 1-16 THRU OZ 1-19 FOR COMPLETE SYSTEM DESCRIPTIONS.

3808 N. Sullivan Bldg. #7 Spokane, WA 99216



PROJECT TITLE
OZARK I
CXT STANDARD BUILDING

NOTICE
The information contained herein is proprietary and the exclusive property of CXT Incorporated. The information may only be used by the original recipient for the purpose intended. Reproduction or distribution of this information is strictly prohibited without the prior written consent of CXT Incorporated. By allowing use of this information, CXT Incorporated grants no warranty, express or implied, including a warranty of merchantability or of fitness for a particular purpose.

REV.	DESCRIPTION	APPROVAL	DATE
SCALE	1/2"=1'-0"	DATE	04-20-16
DRAWN	1	FILE NO.	00-0204
CHECKED		PLOT	24

FLOOR PLAN

DWG NO.	SHEET	REV.
OZ 1-04		